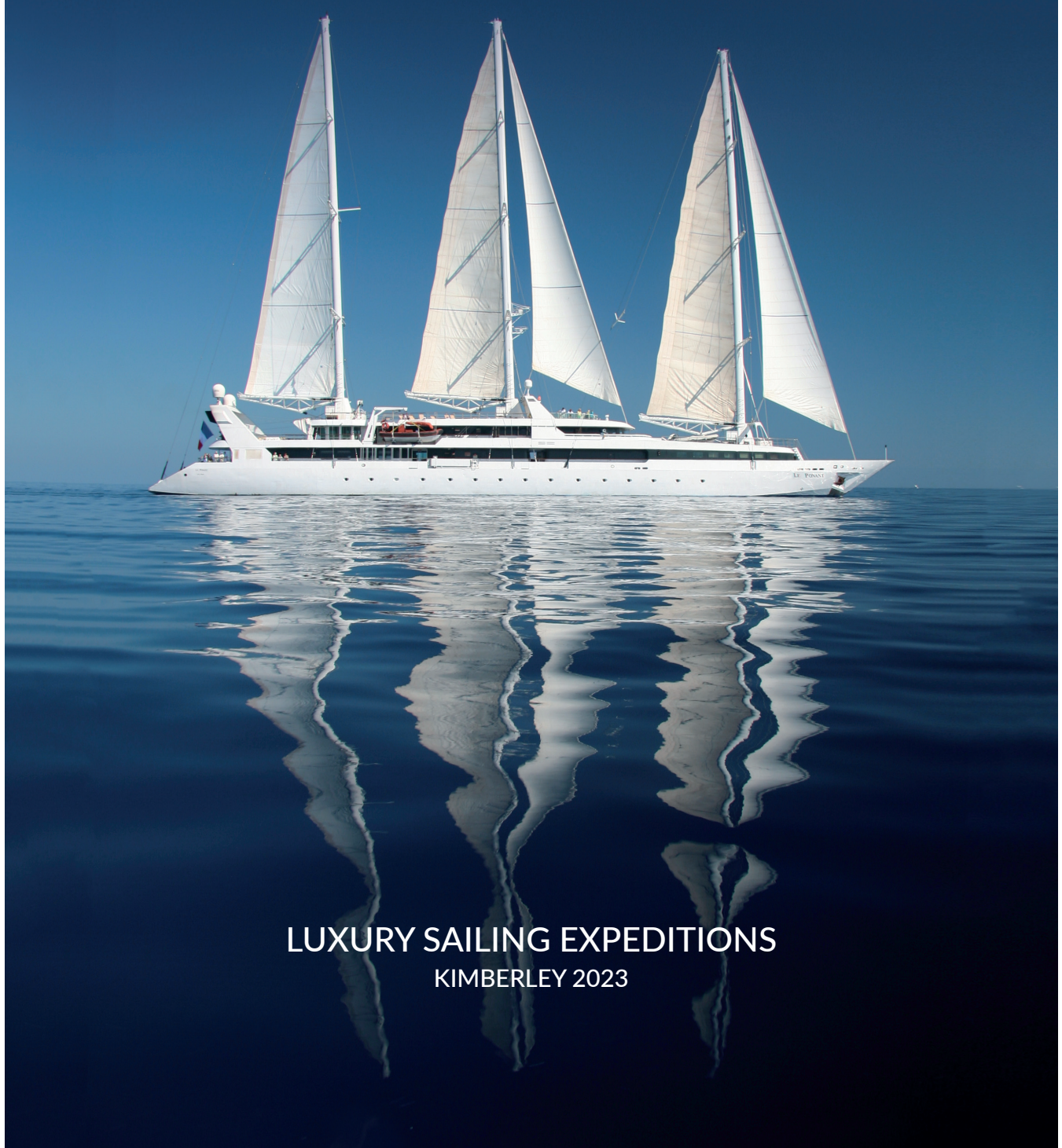


ONE SEASON ONLY

Le Ponant



LUXURY SAILING EXPEDITIONS
KIMBERLEY 2023



LUXURY SAILING EXPEDITIONS IN THE KIMBERLEY

Le Ponant, fresh from a triumphant season sailing the Mediterranean and Seychelles, is preparing to make her way down under to offer an extraordinary sailing adventure of a lifetime in the Kimberley this year, for one season only.

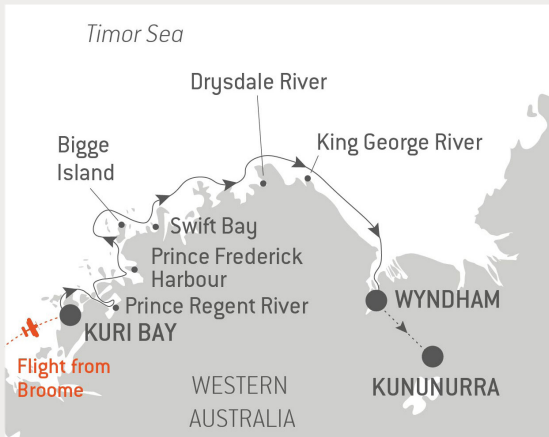
PONANT continues to redefine the limits of expedition travel and is dedicated to providing unparalleled levels of luxury and excitement. The ship's recent refurbishment makes it even more enticing for the fortunate few, who will have the exclusive opportunity to sail on this stunning three-masted yacht.

DISCOVER THE TRUE SPIRIT OF SAILING

Something almost poetic takes place when you step on board this spectacular three-master. The sparkle of the sea, the gentle kiss of the breeze on your skin, the lapping of the waves, the rustling of the wind in the sails, the scents and sounds as you approach the coast; with all your senses fully awakened and alert, it's now time for a real adventure, an adventure that will stay with you forever. It is almost as if time stands still aboard this incredible luxury yacht.



NORTHERN KIMBERLEY SAILING EXPEDITIONS



10 MAY 2023

10-night package from Broome to Kununurra including:

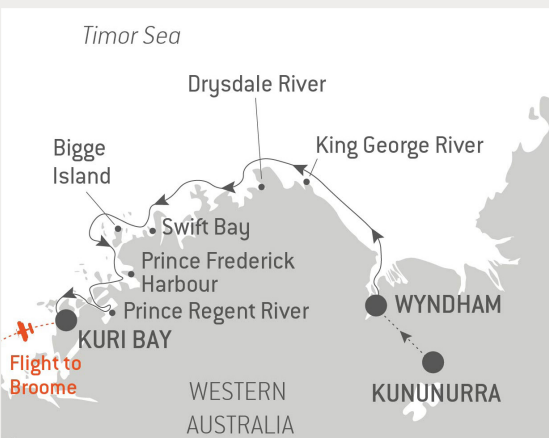
- Transfer from Broome airport to hotel
- 2 nights accommodation at Kimberley Sands Resort with breakfast
- Transfer hotel to Broome airport
- Exclusive Paspaley Grumman Mallard flying boat* for scenic flight Broome to Kuri Bay (approx. 1 hour & 15 mins)
- 7-night all-inclusive sailing expedition on board *Le Ponant* Superyacht from Kuri Bay to Wyndham
- Transfer from Wyndham wharf to hotel in Kununurra (approx. 1 hour & 30 mins)
- 1 night accommodation at The Cambridge Hotel, Kununurra, with breakfast
- Transfer from hotel to Kununurra airport



22 JUNE 2023

9-night package from Kununurra to Kununurra including:

- Transfer from Kununurra airport to hotel
- 1 night accommodation at The Cambridge Hotel, Kununurra, with breakfast
- Transfer from hotel to Kununurra airport
- Exclusive Paspaley Grumman Mallard flying boat* for scenic flight Kununurra to Kuri Bay (approx. 1 hour & 30 mins)
- 7-night all-inclusive sailing expedition on board *Le Ponant* Superyacht from Kuri Bay to Wyndham
- Transfer from Wyndham wharf to hotel in Kununurra (approx. 1 hour & 30 mins)
- 1 night accommodation at The Cambridge Hotel, Kununurra, with breakfast
- Transfer from hotel to Kununurra airport



13 JULY 2023

10-night package from Kununurra to Broome including:

- Transfer from Kununurra airport to hotel
- 1 night accommodation at The Cambridge Hotel, Kununurra, with breakfast
- Transfer from hotel in Kununurra to Wyndham wharf (approx. 1 hour & 30 minutes)
- 7-night all-inclusive sailing expedition on board *Le Ponant* Superyacht from Wyndham to Kuri Bay
- Exclusive Paspaley Grumman Mallard flying boat* for scenic flight Kuri Bay to Broome (approx. 1 hour & 15 mins)
- Transfer from Broome airport to hotel
- 2 night's accommodation at Kimberley Sands Resort with breakfast
- Transfer from hotel to Broome airport

*LE PONANT KIMBERLEY MALLARD FLIGHTS: Luggage restrictions: 20Kg max per guest – soft duffle-style bags only, no hard suitcases.

SOUTHERN KIMBERLEY SAILING EXPEDITIONS



The map shows the coastline of Western Australia from Broome in the south to Kununurra in the north. Key locations marked include Broome, Lacepede Islands, Cape Leveque, Buccaneer Archipelago, Montgomery Reef, Kuri Bay, Wijingarra, Bard Bard, Doubtful Bay, Horizontal Falls, and Kununurra. A red dashed line with an airplane icon indicates a flight from Kununurra to Broome. The Timor Sea is labeled to the north.

31 MAY & 14 JUNE 2023

10-night package from Broome to Kununurra including:

- Transfer Broome airport to hotel
- 2 nights accommodation at Kimberley Sands Resort with breakfast
- Transfer hotel to Broome wharf
- 7-night all-inclusive sailing expedition on board *Le Ponant* Superyacht from Broome to Kuri Bay
- Exclusive Paspaley Grumman Mallard flying boat* for scenic flight Kuri Bay to Kununurra (approx. 1 hour & 30 minutes)
- Transfer Kununurra airport to hotel
- 1 night accommodation at The Cambridge Hotel, Kununurra, with breakfast
- Transfer from hotel to Kununurra airport



The map shows the coastline of Western Australia from Kununurra in the north to Broome in the south. Key locations marked include Kununurra, Wijingarra, Bard Bard, Doubtful Bay, Horizontal Falls, Kuri Bay, Montgomery Reef, Buccaneer Archipelago, Cape Leveque, Lacepede Islands, and Broome. A red dashed line with an airplane icon indicates a flight from Kununurra to Broome. The Timor Sea is labeled to the north.

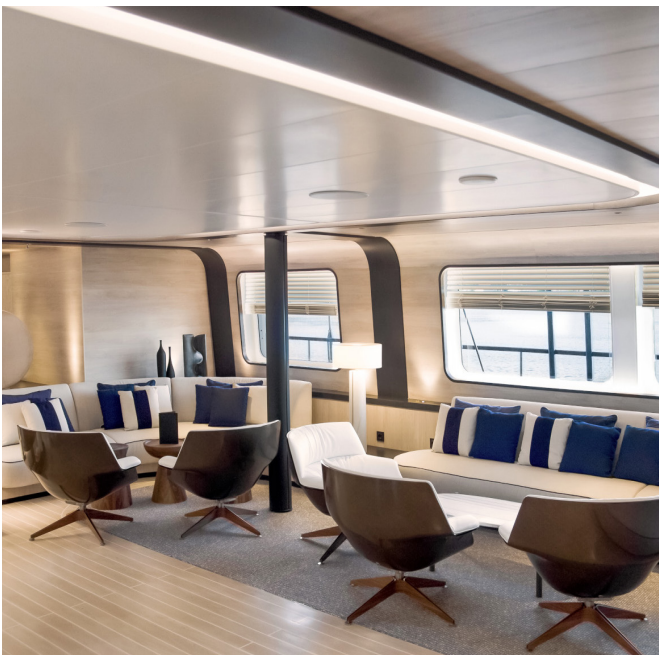
8 JUNE 2023

10-night package from Kununurra to Broome including:

- Transfer from Kununurra airport to hotel
- 1 night accommodation at The Cambridge Hotel, Kununurra, with breakfast
- Transfer from hotel to Kununurra airport
- Exclusive Paspaley Grumman Mallard flying boat* for scenic flight Kununurra to Kuri Bay (approx. 1 hour & 30 minutes)
- 7-night all-inclusive sailing expedition on board *Le Ponant* Superyacht from Kuri Bay to Broome
- Transfer from Broome wharf to hotel
- 2 nights accommodation at Kimberley Sands Resort with breakfast
- Transfer hotel to Broome airport

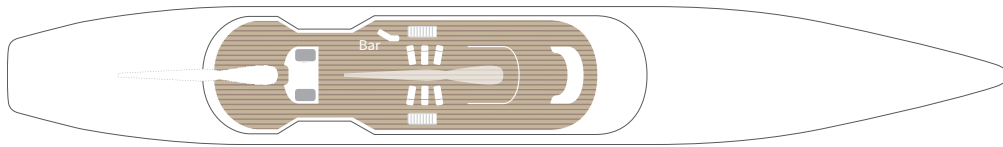
*LE PONANT KIMBERLEY MALLARD FLIGHTS: Luggage restrictions: 20Kg max per guest – soft duffel-style bags only, no hard suitcases.



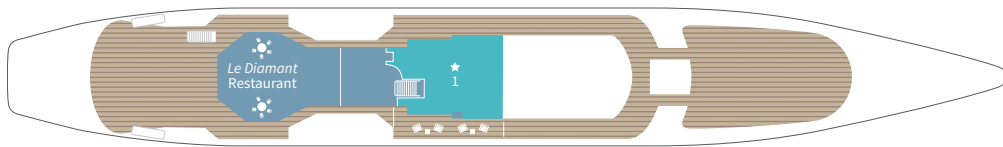


DECK PLANS

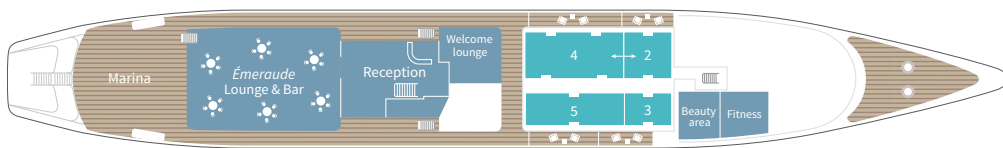
SUN DECK



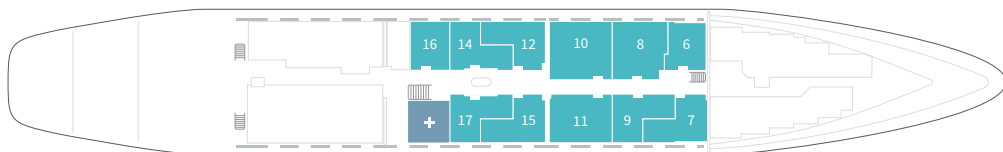
ZEPHYR DECK



ALIZES DECK



MISTRAL DECK



1 Owner's Suite

2 Alizes Stateroom

3 & 5 Alizes Prestige Staterooms

4 Alizes Privilege Suite

4 + 2 Alizes Grand Privilege Suite

6 & 16 Mistral Staterooms

7, 9, 12, 14, 15 & 17 Mistral Prestige Staterooms

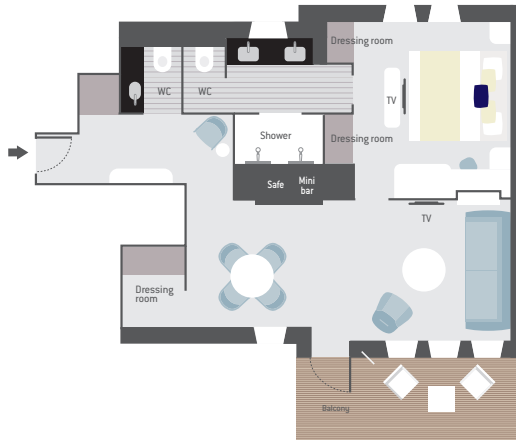
8 et 11 Mistral Junior Suites

10 Mistral Prestige Suite

DISCOVER YOUR STATEROOM

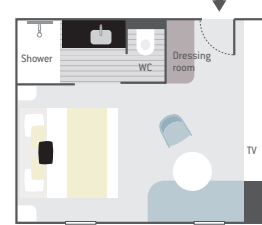
OWNER'S SUITE

(47 sq.m. / 506 sq.ft. + 9 sq.m. / 97 sq.ft. private balcony)



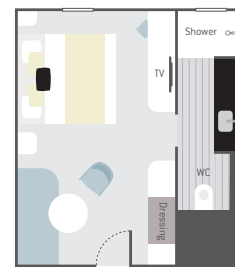
MISTRAL PRESTIGE SUITE

(27 sq.m. / 291 sq.ft. + porthole)



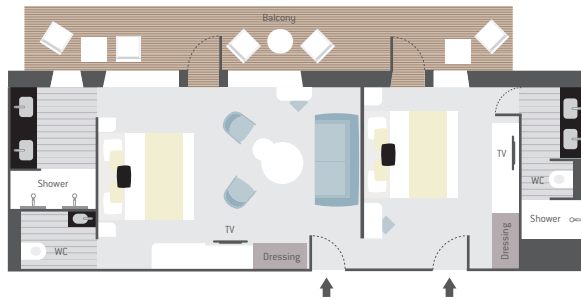
MISTRAL JUNIOR SUITE

(22 sq.m. / 237 sq.ft. + porthole)



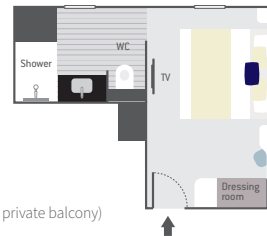
ALIZES GRAND PRIVILEGE SUITE

(49 sq.m. / 527 sq.ft. + 13 sq.m. / 140 sq.ft. private balcony)



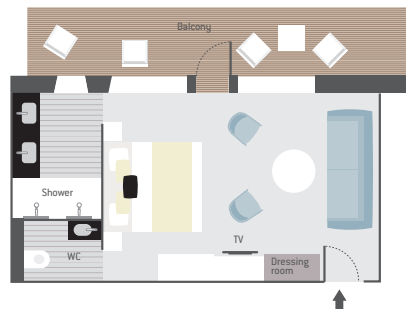
MISTRAL PRESTIGE STATEROOM

(16 sq.m. / 172 sq.ft. + porthole)



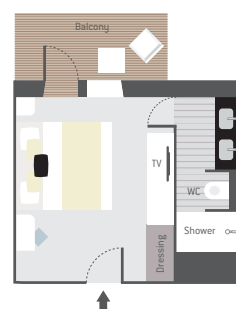
ALIZES PRIVILEGE SUITE

(30 sq.m. / 323 sq.ft. + 9 sq.m. / 97 sq.ft. private balcony)



ALIZES STATEROOM

(19 sq.m. / 205 sq.ft. + 4 sq.m. / 43 sq.ft. private balcony)



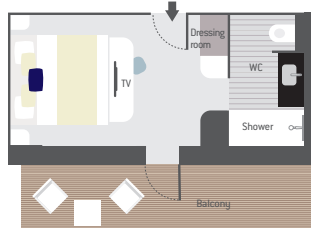
MISTRAL STATEROOM

(14 sq.m. / 151 sq.ft. + porthole)

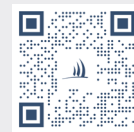


ALIZES PRESTIGE STATEROOM

(16 sq.m. / 172 sq.ft. + 8 sq.m. / 86 sq.ft. private balcony)



Visit *Le Ponant*
by scanning
this QR code







AMENITIES ON BOARD LE PONANT

- Individual air-conditioning
- Double bed (180 cm x 200 cm) or two single beds (90 cm x 200 cm), depending on the cabin; adjoining cabins possible
- Minibar
- Flat-screen TV with satellite channels
- Bose™ bluetooth speaker
- Desk with writing paper
- Electronic safe
- Selection of Hermès® bath products
- Dressing table and hairdryer
- Direct phone line by satellite
- 110/220 volt electricity supply
- 24-hour room service
- Unlimited free Wi-Fi

Public areas

RECEPTION

LOUNGES

- **Emeraude bar and lounge:** library, tearoom, bar, and live entertainment on certain evenings. Access to the outdoor terrace.
- **The outdoor bar:** lounge area

RESTAURANT

- **Le Diamant:**
Seating capacity: 34. Panoramic restaurant serving breakfast, lunch (buffet) and dinner (gastronomic menu). Refined organic cuisine made with local ingredients, and a range of fine food and drink products.

LEISURE

- **The wellness space:**
Spa with massage cabin and Biologique Recherche care products. Yoga sessions available.
- **Four Zodiacs for expeditions.**
- **Four Expedition and Naturalist guides** available on board each Kimberley sailing expedition.





KG TRAVEL

.COM.AU
AN INDEPENDENT AFFILIATE OF
MAIN BEACH TRAVEL

Kylie Mee
+61 426 935 060
kyliemee@mainbeachtravel.com.au

Gary Deigan
+61 426 918 402
gary@mainbeachtravel.com.au



#PONANT #PONANTMoment